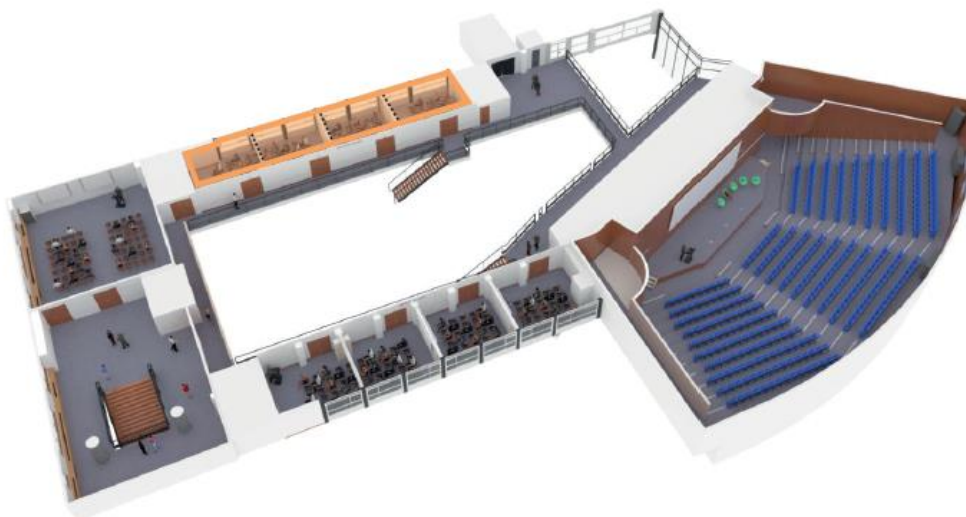


KILIMANDJARO

2ND FLOOR



DESCRIPTION

The 4 Kilimandjaro salons, each offering an area of 35 m², are modular and can accommodate from 10 to 120 people. These salons are particularly suited to subcommissions, meetings, workshops as well as standing or sitting buffets, stand or poster exhibitions, etc.

EQUIPMENTS OF EACH SALON

- 1 video projector WUXGA 1920 x 1200 – 3600 lumens – with HDMI or GVA connection
- 1 screen
- PA: 100 KW amp + 1 wireless microphone and 1 PC audio input
- WiFi
- Acoustic partitions

CONFIGURATIONS

ESPACE	SURFACE En m ²	En nombres de personnes					
		EN U	RÉUNION	RESTAURATION	EXPOSITION	COCKTAIL	CLASSE
KILIMANDJARO							
> 1 salon	35 m ²	14	24	30		25	18
> 2 salons	70 m ²	25	60	50	50	55	40
> 3 salons	105 m ²		90	70	70	80	68
> 4 salons	140 m ²		120	100		100	94

CENTRE DE CONGRÈS DU WTC GRENOBLE :

5 -7 , place Robert Schuman – BP 1521
 38025 Grenoble Cedex 1
 T +33 (0)4 76 28 28 80
 F +33 (0)4 76 28 27 95